



## TECHNICAL DETAILS

Breaker type RCS36 is a 3 phase, metal clad, withdrawable type indoor vacuum circuit breaker. having 4 separate compartments: CT and cable chamber (1), Bus bar chamber(2), Breaker chamber(3), instrument & relay panels (4) are enclosed in separate metal compartment. Separate PT chamber is provided either at the top of Bus bar chamber in case of draw-out PTs or at the rear of bus bar panel in case of fixed PT. The breaker is rated for a maximum current, voltage and breaking capacity of 2000A, 33kV, 26.3 kA respectively.

The special features of this breaker are:

- A Sturdy Compact, maintenance free mechanism suitable for 100000 (one hundred thousand) Operations
- Provision of interlocks for the safe draw in/draw out of VCB under the proper conditions of service, test and isolation positions.
- Visible Snatch Gap to determine Contact erosion.
- Independent support under all the 3 Interrupters eliminates Pole discrepancy
- Silent Spring Charging Operation.
- Provision for integral earth switch
- Motorised draw-in/out facility under door closed condition

## CONSTRUCTION DETAILS

The VCB is mounted on a truck which is manufactured to precise dimensions to ensure interchangeability of the truck (moving part) with the panel (Fixed part). It is equipped with a common drive for the three interrupters, housed in epoxy resin cast housing. The vacuum interrupters positioned inside the poles are connected to the main shaft of the drive mechanism by insulated drive rods. The interrupters are operated by the spring charged mechanism.

# 33 KV INDOOR VCB TYPE RCS36

## TECHNICAL DATA

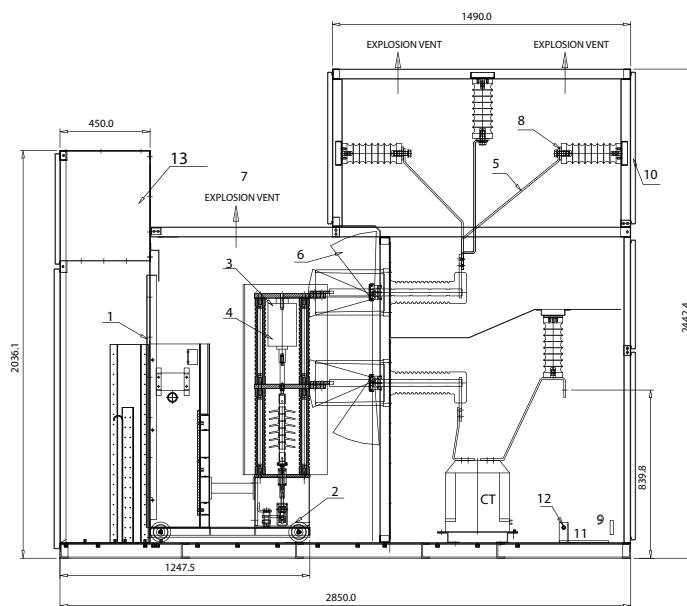
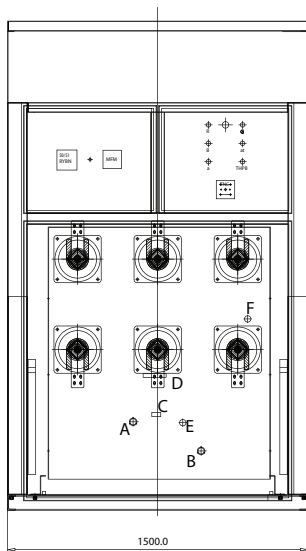
Type reference	: RCS 36
Applicable standards	: IEC 62271-100, IS13118
Rated voltage	: 36kV
1 Min A.C withstand test level	: 70KV
Impulse withstand	: 170kVp
Current ratings	: 2000 A
Maximum peak current	: 66 kA
Short circuit current (3 sec)	: 26.3kA
Rated short circuit making current	: 66kA
Rated short circuit breaking current	: 26.3kA
First pole to clear factor	: 1.2



The Drive mechanism besides the manual close/trip facilities also has solenoid coils for remote operation through protective relays. It also has two mechanically driven flags to show the status of breaker operation (i.e. close/open) and the status of closing spring (i.e. Charged/free). The VCB truck is put into service by the operation of safety shutters. The truck is separated from the bus bars by spout bushings. A 24 or 32 pin plug and socket mounted on the truck is wired to the components of the operating mechanism such that interlocking of plug prevents the breaker movement when it is not engaged into the socket. The interlocks are generally provided for the safe operation of the breaker. When it is not in use, the feeder end of the panel is grounded either by an earth switch built integrally into the panel or by a separate truck. A control and relay panel with all instruments and indication is provided at the front.

# 33 KV INDOOR VCB TYPE RCS36

## TEST LEVELS



### LEGEND FOR BREAKER

- A. MANUAL PUSH BUTTON FOR TRIP.
- B. MANUAL PUSH BUTTON FOR CLOSE.
- C. FLAG INDICATOR ON/OFF.
- D. FLAG INDICATOR SPRING CHARGE.
- E. MANUAL SPRING CHARGE HANDLE.
- F. MANUAL TRUCK DRAW IN/OUT HANDLE.

### LEGEND FOR PANEL

- 1. VCB TRUCK.
- 2. DRIVE MECHANISM.
- 3. POLE ASSY.
- 4. INTERRUPTER
- 5. DROP BUSBAR
- 6. SAFETY SHUTTER.
- 7. EXPLOSION VENT.
- 8. COMMON BUS
- 9. EARTH BUS (50X5)COPPER.
- 10. REAR DOOR BOLTED WITH LOUVERS AND WIRE MESH.
- 11. CABLE GLAND PLATE
- 12. CABLE SUPPORT ANGLE
- 13. C&R PANEL

### NOTE:

- 1. ALL DIMENSIONS ARE IN MM
- 2. WEIGHT OF BREAKER: 1500KG(approx.)



## ON LOAD GEARS

432, 433, SIDCO Ambattur, Chennai - 600 098.

Tel : +91-44-43935800, 4393 5811. Fax : +91-44-4393 5888

E-mail : [oltc-marketing@onloadgears.com](mailto:oltc-marketing@onloadgears.com)