



11KV TAP CHANGER TYPE [A] ABS

TECHNICAL DETAILS

[A]ABS11 OLTC is air insulated, externally mounted On Load Tap Changer. This OLTC works on the principle of high speed transition resistance & is suitable for both star and delta connected dry type or oil less transformer winding with linear or change-over (coarse-fine/reverser) type tapping arrangement. It has 2 different models rated for 65 and 100Amps. (Refer tech. data for details). The OLTC follows the principle of flag cycle resulting in Bidirectional power flow. The 65A tap changer may be used on star connected transformers up to 1.25MVA and on delta connected transformers up to 2MVA whereas 100A tap changer may be used up to 2MVA on star connected transformers and up to 3.3MVA on delta connected transformers. It can be used up to maximum 17 positions, when connected with a change-over switch. The compact design makes its operationally more efficient than any other tap changer in its voltage and current rating class.

CONSTRUCTION DETAILS

The complete tap-changer is housed in a sheet metal enclosure, where the drive mechanism and the selector switch chambers are separated by a metal sheet. The fixed contacts are mounted on phase boards, over which the moving contact moves and selects the tap. The selection of tap position in all the

TECHNICAL DATA

TRated voltage	:	12kV
Max.Rated through current	:	100A
Max.Rated step voltage	:	250V
Rated insulation level	:	28kV power freq and 75kVP impulse
Max.number of tapping positions	:	17 with change over

three phases simultaneously by a selector switch. The selector switch combines the function of a tap selector and a diverter switch and has a main contact and an auxiliary contacts. The drive mechanism is coupled to the selector switch by drive shaft and series of gears and has an energy storage device that releases energy to drive the selector switch.

MOUNTING ON TRANSFORMER

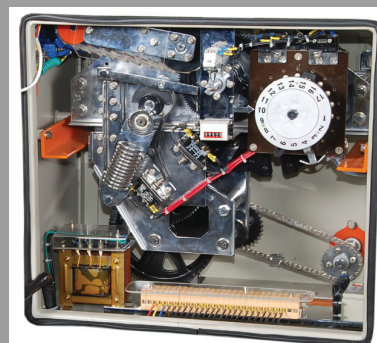
The tap changer is mounted on the transformer by taking out leads via the terminal board of the tap-changer, which is a part of OLG supply.

PROTECTIVE DEVICE

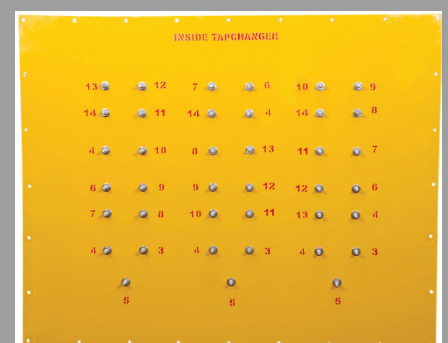
The tap-changer is protected by a smoke detector, positioned on the power switch chamber of the tap-changer.



Selector Switch (2)



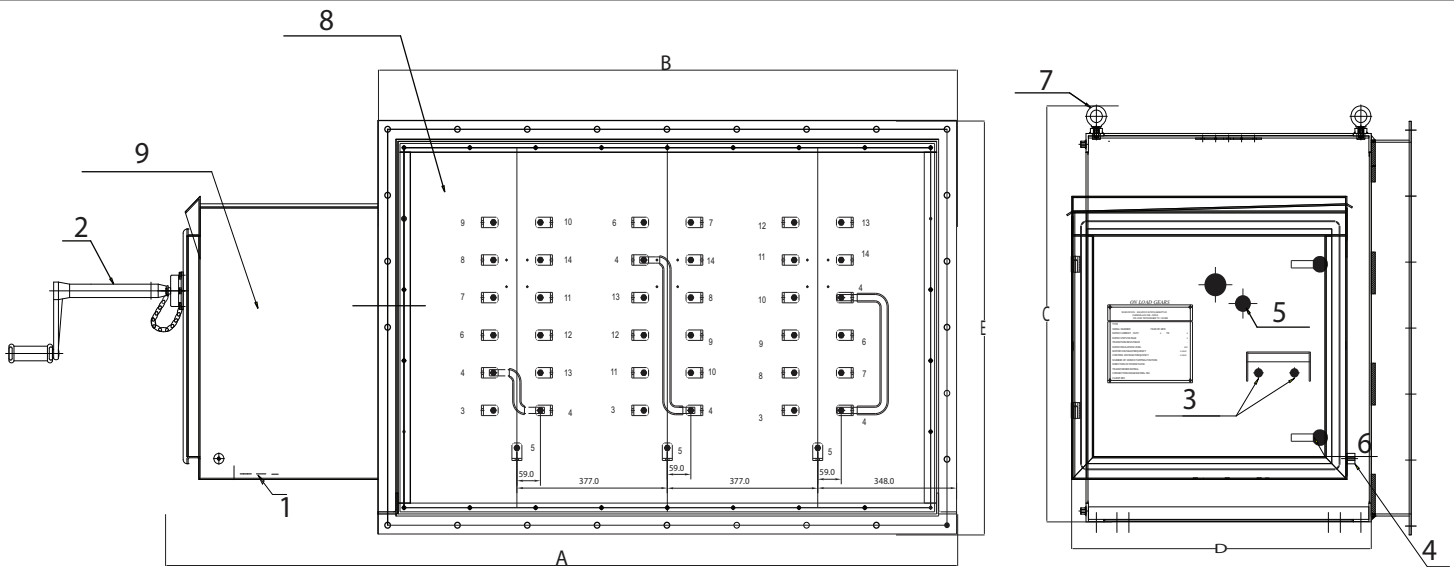
Drive Mechanism (3)



Terminal Board (9)

11KV TAP CHANGER TYPE [A] ABS

TEST LEVELS



1. CRANK ENTRY GLAND PLATE
2. REMOVABLE CRANK HANDLE
3. PUSH BUTTON FOR RAISE AND LOWER
4. EARTHING BOSS
5. WINDOW FOR TAP NO & COUNTER

6. DOOR HANDLE
7. LIFTING LUG
8. POWER SWITCH CHAMBER
9. DRIVE MECHANISM

NOTE

1. ALL DIMENSIONS ARE IN MM.

NOTE:

- (a) APPROX. WT. OF OLTC : - 380 KG
(d) TRANSPORTATION DIMNS ARE MARKED
THUS X

No of positions	A	B	C	D	E
17 position 100A	1985	1450	996	752	940
17 position 65A	1668	1200	996	752	940

TESTING

As per IEC 60214 and IS 8468 all type tests are successfully performed on this On-load tap-changer.

TECHNICAL DATA

Model No	No of positions	Current rating in A	Tap arrangement	Transition Cycle	Tap changer Wt with oil
1	17	65	Change over	Bi-directional flag	300 Kg
2	17	100	Change over	Bi-directional flag	380 Kg



ON LOAD GEARS

432, 433, SIDCO Ambattur, Chennai - 600 098.

Tel : +91-44-43935800, 4393 5811. Fax : +91-44-4393 5888

E-mail : oltc-marketing@onloadgears.com