

## TECHNICAL DETAILS

RMV Type OLTC is a single compartment design, with a selector switch mounted inside the transformer tank. It works on the principle of high speed transition resistance and is suitable for both star and delta connected transformer with linear or change-over (coarse fine/reversing) type tapping arrangement. The tap changer follows the principle of flag cycle, making it suitable for bi-directional flow of power. The OLTC has a maximum current and voltage ratings of 200A and 132kv respectively and, it may be used on delta connected transformers up to 80 MVA ratings. It can give a maximum of 23 positions when connected with a change over. The compact design and less oil requirement is an added advantage to this tap changer.

## TAP CHANGER TYPE RMV

### CONSTRUCTION DETAILS

The tap changer is constructed as a vertical column; the selector switch mounted inside oil tight cylindrical vessel is suspended from the tap changer head. The selector switch chamber can be removed for service purpose. Several fixed contacts are mounted over the cylindrical vessel over which the moving contacts moves and selects the tap. This is done in all the phases by a selector switch which combines the function of tap selector and the diverter switch. The motor drive mechanism mounted externally in a sheet metal enclosure, is coupled to the tap changer unit by external drive shafts and the bevel gear. It consists of a motor reduction gear, dial switch for tap position indication, limit switches for stopping the motor at end positions, operation counters, and hand drive for emergency operations.

### MOUNTING ON TRANSFORMERS

The tap changer is mounted inside the transformer tank. The tapping lead from the transformer winding is directly connected to the fixed contact terminals of the tap selector.

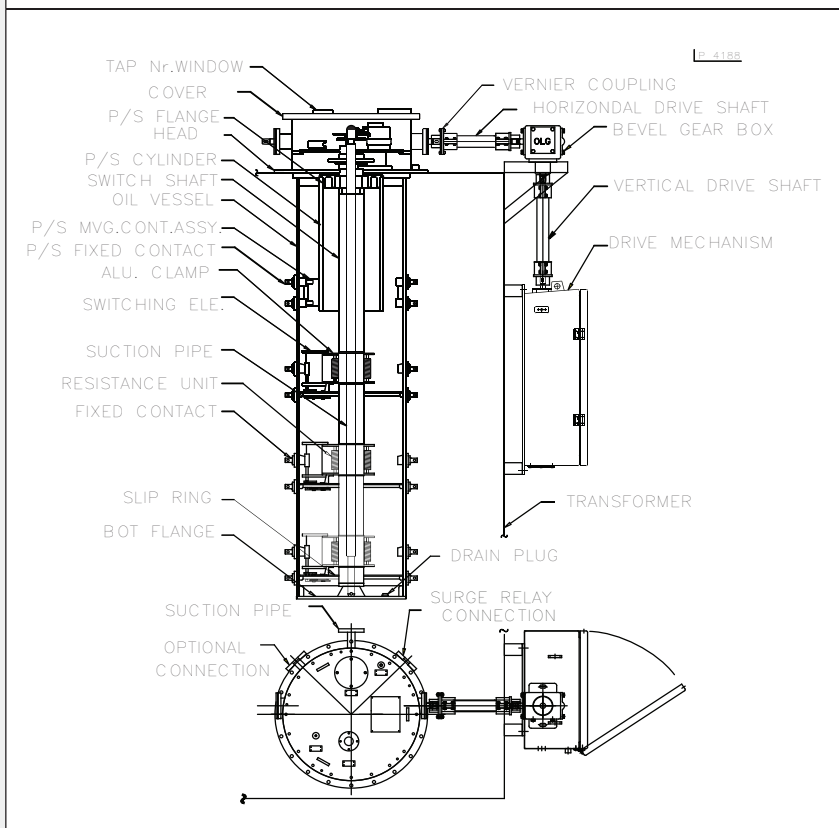
### PROTECTION

The tap changer can be fitted with an oil surge operated protection relay, as well as a pressure relief device for protection.

## TECHNICAL DATAS

Contents	RMV 111 33	RMV 111 66	RMV 110/66	RMV 132/66
Rated voltage	33kV	66kV	110/66kV	132/66kV
Max.through current	200A	200A	200A	200A
Max.step voltage	1650V	1650V	1650V	1650V
No of phases	3	3	3	3
Operating positions	Without change over selector: max of 12 positions With change over selector: max of 23 positions			
Rated insulation level	70kV power freq 170kVp impulse	140kV power freq 350kVp impulse	230 power freq 550 impulse	275kV power freq 650kVp impulse
Weight of tap Changer Without Oil	314kgwith linear 340kg-with change over	345kg linear 380kg-with change over	365kg linear 400kg-with changeover	370kgwith linear -
Oil content	210lts-with linear 270lts-with change over	260lts-linear 325lts with Change over	287lts-linear 350lts-with change over	301lts-with linear -

### OUTLINE DIAGRAM



### TYPE TESTING

All type tests are successfully performed on this On-load tap-changer as per IEC 60214 and IS 8468.



### ON LOAD GEARS

432, 433, SIDCO Ambattur, Chennai - 600 098.

Tel : +91-44-43935800, 4393 5811. Fax : +91-44-4393 5888

E-mail : [oltc-marketing@onloadgears.com](mailto:oltc-marketing@onloadgears.com)

[www.onloadgears.com](http://www.onloadgears.com)